

South Carolina Department of Corrections Recidivism Rates of Inmates Released during FY 2013 - FY 2015			
	Year of Release		
	FY 2013	FY 2014	FY 2015
<b>Total Number of Releases</b>	<b>9,623</b>	<b>9,485</b>	<b>9,354</b>
<b>Percentage of Releasees who Returned to SCD C:</b>	<b>Recidivism Rate by Year of Release</b>		
	<b>FY 2013</b>	<b>FY 2014</b>	<b>FY 2015</b>
Within One Year or Less	6.2%	5.6%	5.8%
Within Two Years or Less	16.2%	15.2%	15.7%
Within Three Years or Less	23.1%	22.7%	22.3%
<b>Comparison of 3-Year Recidivism Rates by Inmate Attributes</b>			
<b>Attributes</b>	<b>FY 2013</b>	<b>FY 2014</b>	<b>FY 2015</b>
Overall Rate	23.1%	22.7%	22.3%
<b>Gender</b>			
Males	24.1%	23.7%	23.1%
Females	15.2%	14.8%	16.2%
<b>Type of Release</b>			
Maxout (Expiration of Sentence)	19.0%	18.7%	18.6%
Parole	17.4%	19.0%	19.5%
Probation	32.2%	34.3%	31.3%
Community Supervision	14.7%	12.0%	12.9%
Supervised Reentry	36.1%	27.9%	25.1%
Youthful Offender Act* - Parole	37.7%	30.9%	31.9%
Youthful Offender Act* - Maxout	27.8%	25.0%	32.8%
Youthful Offender Act* - Intensive Supervision Parole	22.9%	28.9%	30.3%
<b>Age at Release</b>			
Under 25 Years	31.8%	28.5%	29.1%
25-30 Years	23.1%	23.4%	24.1%
31-40 Years	20.3%	21.9%	19.7%
Over 40 Years	19.8%	19.1%	19.2%
<b>Program Participation</b>			
Pre-Release	20.8%	20.8%	20.4%
Work Program	19.1%	22.6%	16.3%
Labor Crew	19.1%	21.9%	18.0%
Labor Crew/Work Program	19.1%	21.8%	18.0%
Prison Industry	13.5%	12.5%	13.4%
GED Earned in SCDC Education Program	21.7%	21.3%	17.3%
<b>Sentence Type</b>			
Youthful Offender Act*	35.6%	29.7%	30.8%
Straight-time	21.7%	21.9%	21.4%
<b>Criminal History</b>			
Had Conviction and/or Commitment	25.4%	25.6%	25.4%
Had Commitment	27.1%	26.8%	26.7%
No Known Priors	19.4%	18.0%	17.4%
<b>Mental Health Classification at time of release</b>			
Mentally III	25.9%	25.8%	24.4%
Non-Mentally III	22.8%	22.3%	22.1%

\* Youthful Offender Act (YOA) inmates serve an indeterminate sentence of 1 to 6 years. Intensive Supervision Parole\* releases began in FY13; this parole program includes "first time" youthful offenders who undergo intensive programs/oversight while institutionalized and while on parole supervision.

South Carolina Department of Corrections Profile of Inmates in Institutional Count (Including Inmates on Authorized Absence) as of June 30, 2018			
Characteristics	Male Population	Female Population	Total Population
<b>TOTAL Inmates Population</b>	<b>17,605</b>	<b>1,353</b>	<b>18,958</b>
<b>Current Age</b>			
Average Current Age	38.6	37.8	38.5
21 & Under	786 (4%)	35 (3%)	821 (4%)
22-25	1,721 (10%)	118 (9%)	1,839 (10%)
26-35	5,678 (32%)	501 (37%)	6,179 (33%)
36-55	7,441 (42%)	597 (44%)	8,038 (42%)
56 and Over	1,979 (11%)	102 (8%)	2,081 (11%)
Average Age at Admission	32.1	33.8	32.2
<b>Race</b>			
Black	10,948 (62%)	407 (30%)	11,355 (60%)
White	6,133 (35%)	914 (68%)	7,047 (37%)
Other	524 (3%)	32 (2%)	556 (3%)
<b>Citizenship</b>			
Aliens	406 (2%)	17 (1%)	423 (2%)
Citizens	17,199 (98%)	1,336 (99%)	11,535 (98%)
<b>Sentencing Data/Criminal History</b>			
<b>Admission Type:</b>			
New	14,301 (81%)	1,204 (89%)	15,505 (82%)
Revocator	3,135 (18%)	147 (11%)	3,282 (17%)
Other	169 (0%)	2 (0%)	171 (1%)
With Current Violent Offense	12,666 (72%)	669 (49%)	13,335 (70%)
With Prior Criminal History	10,320 (59%)	506 (37%)	10,826 (57%)
With Prior Commitments	7,384 (42%)	348 (26%)	7,732 (41%)
Average Sentence Length in Years 1	15.3	10.2	14.9
Average Time to Serve before Maxout 2	6.7	4.3	6.5
Sentences One Year or Less (excl. YOA)	256 (1%)	63 (5%)	319 (2%)
Sentences More than 20 years (excl. Lifers)	3,498 (20%)	159 (12%)	3,657 (19%)
With Life Sentence	2,028 (12%)	73 (5%)	2,101 (11%)
With YOA/Juvenile Sentence	554 (3%)	51 (4%)	605 (3%)
On Death Row	36 (0%)	0 (0%)	36 (0%)
Non-Parolable (includes TIS inmates)	10,496 (60%)	560 (41%)	11,056 (58%)
TIS Sentences	10,266 (58%)	557 (41%)	10,823 (57%)
<b>Special Needs</b>			
With Children 3	11,635 (66%)	1,057 (78%)	12,692 (67%)
With Convicted Disciplinaries in Last 12 Months	6,061 (34%)	407 (30%)	6,468 (34%)
With Victim Witness Indicator	12,367 (70%)	766 (57%)	13,133 (69%)
Sex Registry	3,115 (18%)	39 (3%)	3,154 (17%)
Required DNA Testing	17,352 (99%)	1,281 (95%)	18,633 (98%)
Chemical Dependency per SASSI/TCUDD 4	5,827 (33%)	688 (51%)	6,515 (34%)
<b>Education/Work</b>			
Average Education Level at Intake	10.6	11.0	10.6
Without HS/GED	8,815 (50%)	563 (42%)	9,378 (49%)
<b>Leading Most Serious Offense 5</b>			
Homicide	21%	Dang. Drugs	22%
Dang. Drugs	15%	Homicide	21%
Burglary	14%	Burglary	8%
Robbery	13%	Robbery	8%
Sexual Assault	9%	Larceny	7%
		Sexual Assault	8%
<b>Top Five Committing Counties</b>			
Greenville	9%	Spartanburg	11%
Spartanburg	9%	Greenville	10%
Richland	8%	Horry	8%
Charleston	8%	York	6%
		Richland	5%
<b>Mental Health Classification</b>			
No Mental Health Problem	14,179 (81%)	605 (45%)	14,784 (78%)
Developmentally Disabled	17 (0%)	2 (0%)	19 (0%)
Mentally III	2,989 (17%)	702 (52%)	3,691 (19%)
Not Available/Unknown	420 (2%)	44 (3%)	464 (2%)

<sup>1</sup> Excludes Lifers, Death-Row & YOA's

<sup>2</sup> Include inmates to be released to Community Supervision under Truth-in-Sentencing, excludes Lifers, Death-Row and YOA's

<sup>3</sup> Based on inmate self-reported information at intake

<sup>4</sup> Substance Abuse Subtle Screening Inventory (SASSI) stopped being used in January 1997. Currently Texas Christian University Drug Dependency Screen (TCUDD) is used.

<sup>5</sup> To facilitate statistical reporting, SCDC determines a single "most serious offense" (MSO) for each inmate. Before August 2005, the offense with the longest sentence determined MSO. Effective August 2005, inmates' MSO is the offense with the highest severity level (i.e. offenses are classified between severity level 1 and 5, with 5 as the most severe). In cases where an inmate has multiple offenses at the same severity level, SCDC considers the category of each offense, where homicide offenses take precedence, followed by sex offenses and violent offenses. If multiple offenses exist within the same category, the offense with the longest sentence then determines MSO. Because of this definitional change, post-2005 MSO data cannot be compared to pre-2005 MSO data.

NOTE: Percentages may not add up due to rounding.

# THE SOUTH CAROLINA DEPARTMENT OF CORRECTIONS

**BRYAN P. STIRLING**  
DIRECTOR



## SCDC

## FAQs

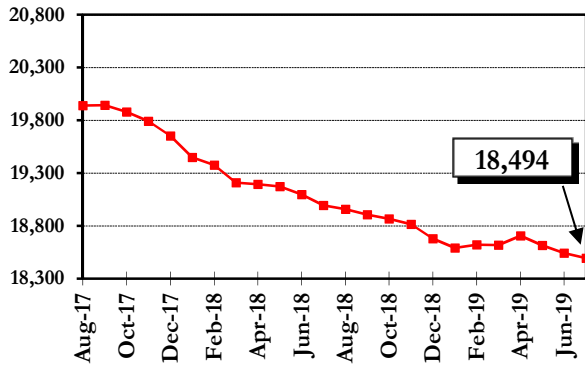
## AUGUST 2019

**For further information, contact:**  
South Carolina Department of Corrections  
Resource and Information Management  
4444 Broad River Road  
Columbia, SC 29210  
(803) 896-8526

This document is available in alternative formats by contacting the number above.

This report contains preliminary statistics. Changes/updates will be posted on the SCDC website [www.doc.sc.gov](http://www.doc.sc.gov).

### SCDC Average Daily Facility Count per Month August 2017 – July 2019



### Admissions to SCDC Fiscal Years 2016 – 2018

ADMISSIONS	FY 2016		FY 2017		FY 2018	
	#	%	#	%	#	%
<b>NEW ADMISSIONS FROM COURT</b>	<b>7,112</b>	<b>80.84%</b>	<b>6,999</b>	<b>80.8%</b>	<b>6,187</b>	<b>81.7%</b>
Indeterminate Sentence (YOA)*	582	6.62%	630	6.6%	530	7.0%
Straight Sentence (Non-YOA)	6,493	73.80%	6,317	73.8%	5,619	74.2%
Other Jurisdiction	37	0.42%	52	0.4%	38	0.5%
<b>PROBATION REVOCATIONS***</b>	<b>1,088</b>	<b>12.37%</b>	<b>854</b>	<b>12.4%</b>	<b>837</b>	<b>11.0%</b>
<b>PAROLE REVOCATIONS</b>	<b>290</b>	<b>3.30%</b>	<b>221</b>	<b>3.3%</b>	<b>283</b>	<b>3.8%</b>
Youthful Offender Act (YOA)	125	1.42%	64	1.4%	57	0.8%
NON-YOA	165	1.88%	157	1.9%	226	3.0%
<b>ISS REVOCATIONS</b>	<b>154</b>	<b>1.75%</b>	<b>127</b>	<b>1.8%</b>	<b>145</b>	<b>1.9%</b>
<b>SUPERVISED RE-ENTRY REVOCATIONS</b>	<b>36</b>	<b>0.41%</b>	<b>43</b>	<b>0.4%</b>	<b>43</b>	<b>0.6%</b>
<b>SF/EPA REVOCATIONS</b>	<b>0</b>	<b>0.00%</b>	<b>0</b>	<b>0.0%</b>	<b>0</b>	<b>0.0%</b>
<b>COMMUNITY SUPV. REVOCATIONS</b>	<b>113</b>	<b>1.28%</b>	<b>104</b>	<b>1.3%</b>	<b>71</b>	<b>0.9%</b>
<b>RE-SENTENCED</b>	<b>5</b>	<b>0.06%</b>	<b>8</b>	<b>0.1%</b>	<b>11</b>	<b>0.1%</b>
<b>DEATH ROW</b>	<b>0</b>	<b>0.00%</b>	<b>0</b>	<b>0.0%</b>	<b>0</b>	<b>0.0%</b>
<b>OTHER **</b>	<b>0</b>	<b>0.00%</b>	<b>1</b>	<b>0.0%</b>	<b>0</b>	<b>0.0%</b>
<b>TOTAL ADMISSIONS</b>	<b>8,798</b>	<b>100.00%</b>	<b>8,357</b>	<b>100.00%</b>	<b>7,577</b>	<b>100.00%</b>

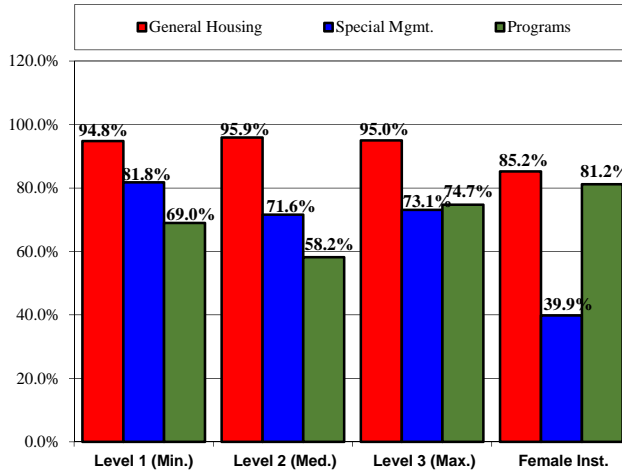
All percentages rounded where possible.  
 \*The Youthful Offender Act provides for indeterminate sentences of 1- 6 years for offenders aged 17-25.  
 \*\* These inmates include appeal bond denied, ICC, and other state inmates.  
 \*\* Death Row admissions figures represent placements to death row, includes new admissions, resentenced and returned inmates.  
 \*\*\* Includes only those inmates released to probation from SCDC.

### Time Served by SCDC Inmates Released Fiscal Years 2016 – 2018

TIME SERVED	FY 2016		FY 2017		FY 2018	
	#	%	#	%	#	%
3 Months or Less	741	8.1%	659	7.1%	501	5.8%
3 Months 1 Day-6 Months	1,234	13.5%	1,154	12.4%	882	10.3%
6 Months 1 Day-9 Months	1,133	12.4%	1,165	12.5%	941	11.0%
9 Months 1 Day-1 Year	749	8.2%	979	10.5%	777	9.1%
1 Year 1 Day-5 Years	3,812	41.7%	4,125	44.3%	4,214	49.1%
5 Years 1 Day-10 Years	922	10.1%	748	8.0%	737	8.6%
10 Years 1 Day-15 Years	332	3.6%	274	2.9%	254	3.0%
15 Years 1 Day-20 Years	140	1.5%	127	1.4%	135	1.6%
20 Years 1 Day-25 Years	46	0.5%	35	0.4%	63	0.7%
25 Years 1 Day-30 Years	13	0.1%	15	0.2%	27	0.3%
Over 30 Years	25	0.27%	24	0.3%	54	0.6%
<b>TOTAL RELEASES</b>	<b>9,147</b>	<b>100.0%</b>	<b>9,305</b>	<b>100.0%</b>	<b>8,585</b>	<b>100.0%</b>
<b>Average Time Served</b>	<b>2 Years 8 Months</b>		<b>2 Years 5 Months</b>		<b>2 Years 8 Months</b>	

This average does not include inmates with life, death, YOA sentences and inmates released on paid fine, remanded appeal, court order, pardon, resentenced, or death.

### Bedspace Utilization Rates by Housing Type July 15, 2019



### Most Serious Offense of SCDC Admissions Fiscal Years 2016 - 2018

OFFENSE CLASSIFICATION	FY 2016	FY 2017	FY 2018
DANGEROUS DRUGS	21.1%	21.5%	22.9%
BURGLARY	15.2%	13.8%	14.6%
ASSAULT	8.4%	8.0%	8.9%
LARCENY	8.6%	9.0%	7.8%
TRAFFIC OFFENSE	5.9%	6.0%	4.8%
ROBBERY	5.9%	6.3%	5.8%
FAMILY OFFENSE	6.3%	7.1%	7.6%
ALL OTHERS	28.6%	28.3%	27.6%
<b>TOTAL ADMISSIONS</b>	<b>8,798</b>	<b>8,357</b>	<b>7,577</b>

### Average Sentence Length of SCDC Admissions Fiscal Years 2016 - 2018

	FY 2016	FY 2017	FY 2018
<b>Average Sentence Length</b>	<b>4 Yrs. 4 Mos.</b>	<b>4 Yrs. 6 Mos.</b>	<b>4 Yrs. 10 Mos.</b>

\* This average does not include inmates with life, death, YOA sentences and inmates released on paid fine, remanded appeal, court order, pardon, resentenced, or death.

### Releases from SCDC by Type Fiscal Years 2016 - 2018

RELEASES	FY 2016		FY 2017		FY 2018	
	#	%	#	%	#	%
EXPIRATION OF SENTENCE/ LESS GOOD TIME	3,920	42.9%	3,919	42.1%	3,067	35.7%
MAXOUT - YOA	98	1.1%	96	1.0%	64	0.7%
PLACED ON PROBATION	1,895	20.7%	1,831	19.7%	1,659	19.3%
PAROLED TO INTENSIVE SUPERVISION SERVICES*	552	6.0%	513	5.5%	492	5.7%
PAROLED BY YOA PAROLE BOARD**	180	2.0%	199	2.1%	193	2.2%
PAROLED BY DPPPS***	655	7.2%	820	8.8%	1,219	14.2%
RE-SENTENCED	15	0.2%	17	0.2%	7	0.1%
COMMUNITY SUPERVISION	1,033	11.3%	985	10.6%	957	11.1%
SUPERVISED RE-ENTRY	692	7.6%	812	8.7%	782	9.1%
DEATH	86	0.9%	86	0.9%	114	1.3%
DEATH-EXECUTED	0	0.0%	0	0.0%	0	0.0%
RELEASED TO EPA	0	0.0%	0	0.0%	0	0.0%
OTHER ****	21	0.2%	27	0.3%	31	0.4%
<b>TOTAL RELEASES</b>	<b>9,147</b>	<b>100.0%</b>	<b>9,305</b>	<b>100.0%</b>	<b>8,585</b>	<b>100.0%</b>

\* Intensive Supervision Administrative Release Authority (ISARA) assumed YOA Parole Board duties on February 1, 2013  
 \*\* The Youthful Offender Act provides for indeterminate sentences of 1 - 6 years for offenders aged 17 - 25.  
 \*\*\* Department of Probation, Parole, and Pardon Services.  
 \*\*\*\* These releases include court ordered, paid fine, appeal bond, pardon, remanded to county and released on furlough.

Average Daily Inmate Population per Year Fiscal Year 2011 - 2019					
Fiscal Year	SCDC Facilities	Other <sup>1</sup>	SCDC Jurisdiction	Change over Last Year	% Change over Last Year
2011	23,293	646	23,939	-771	-3.1%
2012	22,711	623	23,334	-605	-2.5%
2013	22,088	592	22,680	-654	-2.8%
2014	21,712	603	22,315	-365	-1.6%
2015	21,183	590	21,773	-542	-2.4%
2016	20,671	623	21,294	-479	-2.2%
2017	20,483	652	21,135	-159	-0.7%
2018	19,559	686	20,245	-890	-4.2%
2019	18,743	673	19,416	-829	-4.1%

### South Carolina Department of Corrections Cost Per Inmate\* Fiscal Years 2013-2018

Fiscal Year	Based on State Funds Spent		Based on All Funds Spent***	
	Annual Cost Per Inmate	Daily Cost Per Inmate	Annual Cost Per Inmate	Daily Cost Per Inmate
2013	\$16,542	\$45.32	\$18,299	\$50.13
2014	\$17,357	\$47.55	\$19,137	\$52.43
2015	\$17,872	\$48.96	\$19,728	\$54.05
2016	\$18,119	\$49.50	\$19,935	\$54.47
2017	\$19,054	\$52.20	\$20,925	\$57.33
2018	\$21,756	\$59.61	\$23,712	\$64.96

\*Calculation of the SCDC per inmate costs is based on the average number of inmates in SCDC facilities and a small number of authorized absences and does not include state inmates held in designated facilities, institutional diversionary programs, or other non-SCDC locations.