

South Carolina Department of Corrections Recidivism Rates of Inmates Released during FY2006 - FY2008				
	Year of Release			
	FY 2006	FY 2007	FY 2008	
<b>Total Number of Releases</b>	<b>13,716</b>	<b>13,499</b>	<b>12,807</b>	
<b>Percentage of Releasees who Returned to SCDC:</b>	<b>Recidivism Rate by Year of Release</b>			
	<b>FY 2006</b>	<b>FY 2007</b>	<b>FY 2008</b>	
	Within One Year or Less	11.9%	13.1%	12.3%
	Within Two Years or Less	25.6%	25.7%	24.0%
Within Three Years or Less	33.6%	33.5%	30.6%	
<b>Comparison of 3-Year Recidivism Rates by Inmate Attributes</b>				
<b>Attributes</b>	<b>FY 2006</b>	<b>FY 2007</b>	<b>FY 2008</b>	
Overall Rate	33.6%	33.5%	30.6%	
<b>Gender</b>				
Males	35.1%	35.1%	32.2%	
Females	22.3%	20.9%	18.5%	
<b>Type of Release</b>				
Maxout (Expiration of Sentence)	26.0%	25.6%	22.2%	
Parole	27.9%	26.3%	25.2%	
Probation	43.9%	43.5%	41.5%	
Community Supervision	32.6%	32.3%	24.9%	
Youthful Offender Act* - Parole	52.8%	54.1%	52.8%	
Youthful Offender Act* - Maxout	33.9%	40.4%	29.7%	
<b>Age at Release</b>				
Under 25 Years	45.1%	44.9%	43.2%	
25-30 Years	30.8%	31.0%	29.2%	
31-40 Years	31.7%	32.1%	28.2%	
Over 40 Years	27.2%	27.2%	23.3%	
<b>Program Participation</b>				
Pre-Release	31.5%	29.7%	25.0%	
Work Program	27.4%	24.8%	23.4%	
Labor Crew	28.8%	25.4%	23.3%	
Labor Crew/Work Program	28.6%	25.4%	23.3%	
Prison Industry	27.2%	26.4%	23.4%	
<b>Sentence Type</b>				
Youthful Offender Act*	51.2%	52.7%	50.6%	
Straight-time	31.2%	30.7%	27.5%	
<b>Criminal History **</b>				
Had Conviction and/or Commitment	36.4%	36.7%	32.9%	
Had Commitment	38.3%	38.2%	34.6%	
No Known Priors	27.9%	27.2%	26.4%	

\* Youthful Offender Act (YOA) inmates serve an indeterminate sentence of 1 to 6 years.

\*\* Prior to FY05, all priors data based on manual entry of priors at intake; FY05 and after, priors data based on inmate's previous SCDC commitments and data entry of "all convictions" and "out-of-state commitments".

South Carolina Department of Corrections Profile of Inmates in Institutional Count (Including Inmates on Authorized Absence) as of June 30, 2011			
Characteristics	Male Population	Female Population	Total Population
<b>TOTAL Inmates Population</b>	<b>21,824</b>	<b>1,482</b>	<b>23,306</b>
	%	%	%
<b>Current Age</b>			
Average Current Age	35.9	37.0	36.0
21 & Under	8%	4%	8%
22-25	13%	11%	13%
26-35	34%	33%	34%
36-55	40%	48%	40%
56 and Over	6%	5%	6%
Average Age at Admission	31.1	33.8	31.2
<b>Race</b>			
Black	66%	43%	65%
White	31%	55%	33%
Other	3%	2%	3%
<b>Citizenship</b>			
Illegal Aliens	2%	1%	2%
Citizens	98%	99%	98%
<b>Sentencing Data/Criminal History</b>			
<b>Admission Type:</b>			
New	78%	84%	78%
Revocator	20%	15%	20%
Other	1%	0.2%	1%
With Current Violent Offense	60%	40%	59%
With Prior Criminal History	65%	47%	64%
With Prior Commitments	45%	30%	44%
Average Sentence Length in Years <sup>1</sup>	13.2	8.4	12.9
Average Time to Serve before Maxout <sup>2</sup>	5.7	3.6	5.5
Sentences One Year or Less (excl. YOA)	4%	10%	4%
Sentences More than 20 years (excl.lifers)	14%	8%	13%
With Life Sentence	10%	6%	9%
With YOA/Juvenile Sentence	5%	3%	5%
On Death Row	0.2%	0%	0.2%
Non-Parolable (includes TIS inmates)	51%	35%	50%
TIS Sentences (Truth-In-Sentencing)	50%	35%	49%
<b>Special Needs</b>			
With Children <sup>3</sup>	64%	79%	65%
With Convicted Disciplinary in Last 12 Months	34%	20%	33%
With Victim Witness Indicator	55%	48%	55%
Sex Registry	16%	3%	15%
Required DNA Testing	98%	91%	97%
Chemical Dependent per SASSI/TCUDDS <sup>4</sup>	40%	52%	40%
<b>Education/Work</b>			
Average Education Level at Intake	10.5	10.8	10.5
Without HS/GED	58%	49%	57%
<b>Leading Most Serious Offense<sup>5</sup></b>			
Dang. Drugs	18%	17%	18%
Burglary	16%	16%	15%
Homicide	15%	10%	15%
Robbery	14%	7%	13%
Assault	9%	7%	9%
<b>Top Five Committing Counties</b>			
Greenville	9%	12%	10%
Richland	9%	12%	9%
Spartanburg	9%	7%	9%
Charleston	7%	6%	7%
York	6%	6%	6%
<b>Mental Health Classification:</b>			
No Mental Health Problem	87%	69%	86%
Mentally Retarded	0.1%	0.3%	0.1%
Mentally Ill	12%	28%	13%
Not Available/Unknown	0.6%	2.0%	0.7%

<sup>1</sup> Excludes Lifers, Death-Row & YOA's

<sup>2</sup> Include inmates to be released to Community Supervision under Truth-in-Sentencing, excludes Lifers, Death-Row and

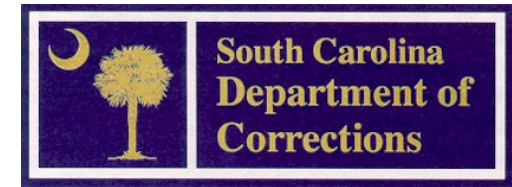
<sup>3</sup> Based on inmate self-reported information at intake

<sup>4</sup> Substance Abuse Subtle Screening Inventory (SASSI) stopped being used in January 1997. Currently Texas Christian

<sup>5</sup> To facilitate statistical reporting, SCDC determines a single "most serious offense" (MSO) for each inmate as the

# THE SOUTH CAROLINA DEPARTMENT OF CORRECTIONS

**WILLIAM R. BYARS, JR.**  
DIRECTOR



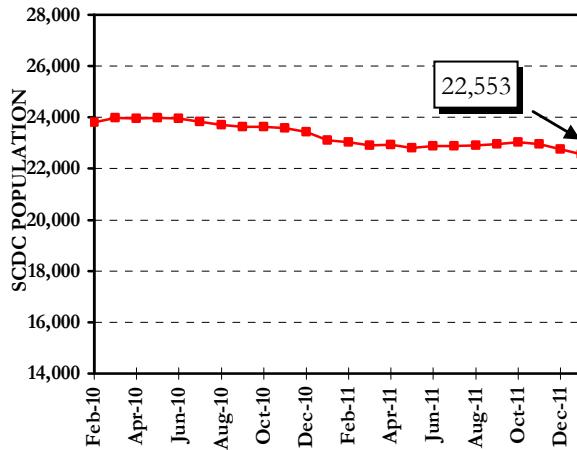
## SCDC FAQs FEBRUARY 2012

**For further information, contact:**  
South Carolina Department of Corrections  
Research and Information Management  
4444 Broad River Road  
Columbia, SC 29210  
(803) 896-8526

This document is available in alternative formats by contacting the number above.

This report contains preliminary statistics.  
Changes/updates will be posted on the SCDC website  
[www.doc.sc.gov](http://www.doc.sc.gov).

### SCDC Average Daily Facility Count per Month February 2010 – January 2012



### SCDC Count and Capacity as of January 15<sup>th</sup> 2012

	Operating Cap.	Physical Count	% of Capacity
Minimum Security	3,589	3,096	87.4%
Medium Security	10,066	9,930	99.2%
Maximum Security	8,908	8,086	91.9%
Female Institutions	1,784	1,400	80.2%
<b>Agency Total</b>	<b>24,347</b>	<b>22,512</b>	<b>92.5%</b>

Average Daily Inmate Population Fiscal Year 2005 - 2011					
Fiscal Year	SCDC Facilities	Other <sup>1</sup>	SCDC Jurisdiction	Change over Last Year	% Change over Last Year
2005	22,905	855	23,760	-265	-1.1%
2006	22,897	789	23,686	-74	-0.3%
2007	23,375	763	24,138	452	1.9%
2008	23,889	748	24,637	499	2.1%
2009	24,017	717	24,734	97	0.4%
2010	24,040	670	24,710	-24	-0.1%
2011	23,293	646	23,939	-771	-3.1%

<sup>1</sup> Other Placements = Special Placements + Designated Facilities

### Admissions to SCDC Fiscal Years 2009 - 2011

ADMISSIONS	FY 2009		FY 2010		FY 2011	
	#	%	#	%	#	%
<b>NEW ADMISSIONS FROM COURT</b>	<b>9,778</b>	<b>74.1%</b>	<b>9,410</b>	<b>74.8%</b>	<b>8,250</b>	<b>75.8%</b>
Indeterminate Sentence (YOA)*	932	7.1%	926	7.4%	725	6.7%
Straight Sentence (Non-YOA)	8,799	66.7%	8,436	67.0%	7,489	68.8%
Other Jurisdiction	47	0.4%	48	0.4%	36	0.3%
<b>PROBATION REVOCATIONS***</b>	<b>1,856</b>	<b>14.1%</b>	<b>1,766</b>	<b>14.0%</b>	<b>1,497</b>	<b>13.7%</b>
<b>PAROLE REVOCATIONS</b>	<b>1,064</b>	<b>8.1%</b>	<b>999</b>	<b>7.9%</b>	<b>835</b>	<b>7.7%</b>
Youthful Offender Act (YOA)	706	5.3%	647	5.1%	510	4.7%
NON-YOA	358	2.7%	352	2.8%	325	3.0%
<b>SF/EPA REVOCATIONS</b>	<b>38</b>	<b>0.3%</b>	<b>30</b>	<b>0.2%</b>	<b>28</b>	<b>0.3%</b>
<b>COMMUNITY SUPV. REVOCATIONS</b>	<b>285</b>	<b>2.2%</b>	<b>269</b>	<b>2.1%</b>	<b>215</b>	<b>2.0%</b>
<b>RE-SENTENCED</b>	<b>174</b>	<b>1.3%</b>	<b>111</b>	<b>0.9%</b>	<b>62</b>	<b>0.6%</b>
<b>DEATH ROW</b>	<b>3</b>	<b>0.0%</b>	<b>1</b>	<b>0.0%</b>	<b>1</b>	<b>0.0%</b>
<b>OTHER **</b>	<b>1</b>	<b>0.0%</b>	<b>0</b>	<b>0.0%</b>	<b>0</b>	<b>0.0%</b>
<b>TOTAL ADMISSIONS</b>	<b>13,199</b>	<b>100.0%</b>	<b>12,586</b>	<b>100.0%</b>	<b>10,888</b>	<b>100.0%</b>

\* The Youthful Offender Act provides for indeterminate sentences of 1 - 6 years for offenders aged 1

\*\* These inmates include appeal bond denied, ICC, and other state inmates.

\*\*\* Includes only those inmates released to probation from SCDC.

### Most Serious Offense of SCDC Admissions Fiscal Years 2009 - 2011

OFFENSE CLASSIFICATION	FY 2009	FY 2010	FY 2011
DANGEROUS DRUGS	19.9%	19.5%	18.8%
BURGLARY	15.4%	15.7%	16.0%
ASSAULT	10.2%	10.4%	10.0%
TRAFFIC OFFENSE	7.9%	8.2%	7.5%
ROBBERY	6.2%	6.5%	6.5%
LARCENY	6.3%	6.4%	7.2%
FRAUDULENT ACTIVITY	5.6%	5.2%	4.8%
ALL OTHERS	28.5%	28.1%	29.2%
<b>TOTAL ADMISSIONS</b>	<b>13,199</b>	<b>12,586</b>	<b>10,888</b>

\* Highlighted areas indicate most common offenses for each fiscal year. Inmates often are committed to SCDC with many offenses, with each carrying a specific sentence, county of commitment, etc. To facilitate statistical reporting, SCDC determines a single "most serious offense" (MSO) for each inmate. Inmates' MSO is the offense with the highest severity level (i.e. offenses are classified between severity level 1 and 5, with 5 as the most severe).

### Average Sentence Length of SCDC Admissions Fiscal Years 2009 - 2011

	FY 2009	FY 2010	FY 2011
<b>Average Sentence Length</b>	<b>4 Yrs. 1 Mos.</b>	<b>4 Yrs. 2 Mos.</b>	<b>4 Yrs. 2 Mos.</b>

### Time Served by SCDC Inmates Released Fiscal Years 2009 - 2011

TIME SERVED	FY 2009		FY 2010		FY 2011	
	#	%	#	%	#	%
3 Months or Less	1,601	11.9%	1,505	11.8%	1,384	11.5%
3 Months 1 Day-6 Months	2,455	18.2%	2,253	17.7%	1,974	16.4%
6 Months 1 Day-9 Months	1,680	12.5%	1,527	12.0%	1,302	10.8%
9 Months 1 Day-1 Year	1,743	13.0%	1,552	12.2%	1,474	12.3%
1 Year 1 Day-5 Years	4,866	36.2%	4,768	37.4%	4,693	39.0%
5 Years 1 Day-10 Years	766	5.7%	751	5.9%	788	6.6%
10 Years 1 Day-15 Years	226	1.7%	248	1.9%	285	2.4%
15 Years 1 Day-20 Years	84	0.6%	97	0.8%	87	0.7%
20 Years 1 Day-25 Years	16	0.1%	28	0.2%	22	0.2%
25 Years 1 Day-30 Years	13	0.1%	9	0.1%	10	0.1%
Over 30 Years	4	0.03%	6	0.05%	5	0.04%
<b>TOTAL RELEASES</b>	<b>13,454</b>	<b>100.0%</b>	<b>12,744</b>	<b>100.0%</b>	<b>12,024</b>	<b>100.0%</b>
<b>Average Time Served</b>	<b>1 Year 9 Months</b>		<b>1 Year 11 Months</b>		<b>2 Years 0 Months</b>	

This average does not include inmates with life, death, yoa sentences and inmates released on paid fine, remanded appeal, court order, pardon, resentenced, or death.

### Releases from SCDC by Type Fiscal Years 2009 - 2011

RELEASES	FY 2009		FY 2010		FY 2011	
	#	%	#	%	#	%
EXPIRATION OF SENTENCE/ LESS GOOD TIME	7,158	53.2%	6,761	53.1%	6,111	50.8%
MAXOUT - YOA	150	1.1%	148	1.2%	125	1.0%
PLACED ON PROBATION	2,809	20.9%	2,720	21.3%	2,448	20.4%
PAROLED BY YOA PAROLE BOARD	1,576	11.7%	1,458	11.4%	1,387	11.5%
PAROLED BY DPPPS*	467	3.5%	447	3.5%	779	6.5%
RE-SENTENCED	146	1.1%	104	0.8%	57	0.5%
RELEASED FROM EPA/SF II	0	0.0%	0	0.0%	0	0.0%
COMMUNITY SUPERVISION	1,044	7.8%	1,014	8.0%	1,026	8.5%
DEATH	57	0.4%	63	0.5%	63	0.5%
DEATH-EXECUTED	3	0.02%	0	0.0%	1	0.0%
OTHER **	44	0.3%	29	0.2%	27	0.2%
<b>TOTAL RELEASES</b>	<b>13,454</b>	<b>100.0%</b>	<b>12,744</b>	<b>100.0%</b>	<b>12,024</b>	<b>100.0%</b>

\* Department of Probation, Parole, and Pardon Services.

\*\* These releases include court ordered, paid fine, appeal bond, pardon, remanded to county and released on furlough.

South Carolina Department of Corrections Cost Per Inmate*				
Fiscal Years 2007-2011				
Fiscal Year	Based on State Funds Spent		Based on All Funds Spent***	
	Annual Cost Per Inmate	Daily Cost Per Inmate	Annual Cost Per Inmate	Daily Cost Per Inmate
2007	\$14,093	\$38.61	\$16,432	\$45.02
2008	\$14,344	\$39.19	\$16,462	\$44.98
2009	\$14,545	\$39.85	\$16,312	\$44.69
2010	\$14,445 **	\$39.58 **	\$15,963	\$43.73
2011	\$14,409 **	\$39.48 **	\$16,406	\$44.95

\*Calculation of the SCDC per inmate costs is based on the average number of inmates in SCDC facilities and a small number of authorized absences and does not include state inmates held in designated facilities, institutional diversionary programs, or other non-SCDC locations.

\*\*In FY 2010 and FY 2011 SCDC received \$22,000,000 and \$40,480,000, respectively, from funds distributed to the states via the American Recovery and Reinvestment Act (ARRA) of 2009. These funds are included in the State Fund figures shown above. The FY 2010 cost figures have been revised from previous postings.

\*\*\*State, Federal and Special Revenues (Excludes Permanent Improvement, Purchases for Resale, Canteen, Prison Industries, Improvement Enterprise Funds, and Interest and Principle Payments)

Based on 365 days per year, except leap year when 366 days are used.